



# Versana Premier™

Care with Confidence













# Introducing Versana Premier

**Powerful. Versatile. Productive.**  
**World-class ultrasound designed for peace of mind.**

The Versana Premier ultrasound system can help you deliver high-quality urological care, patient after patient, day after busy day.

A wide variety of probes and clinical features specifically for urology let you provide quick and comfortable exams, see clearly, confidently diagnose a broad range of conditions, and perform precise biopsies.

-  World-class imaging
-  Urology-specific probes
-  Smart clinical features
-  Intelligent automated productivity tools
-  Clinical and product education\*
-  Expert service and technical support
-  Flexible financing options
-  Access to a network of Versana users

## + Versana Premier

is part of the Versana ultrasound family: complete solutions that help empower care without compromise, balancing capability, affordability, and reliability.





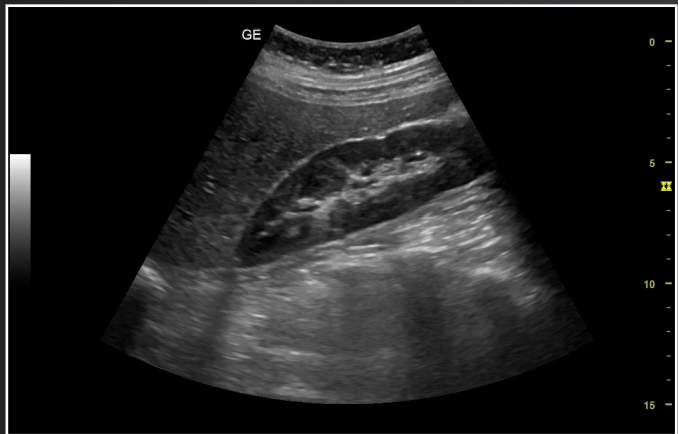


# A partner **you** can trust

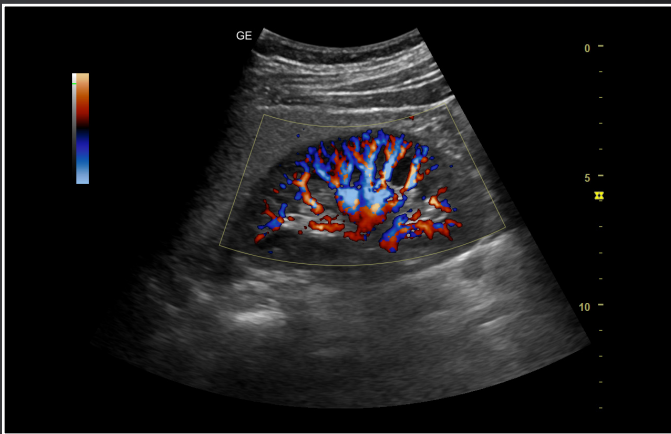
*Take your urology practice to new levels of excellence*

## + **World-class imaging technology**

Versana Premier delivers outstanding imaging power and clarity to boost diagnostic confidence. It helps you see clearly, differentiate between tissues, and delineate structure boundaries. You'll enjoy proven functionalities found on most advanced GE systems.



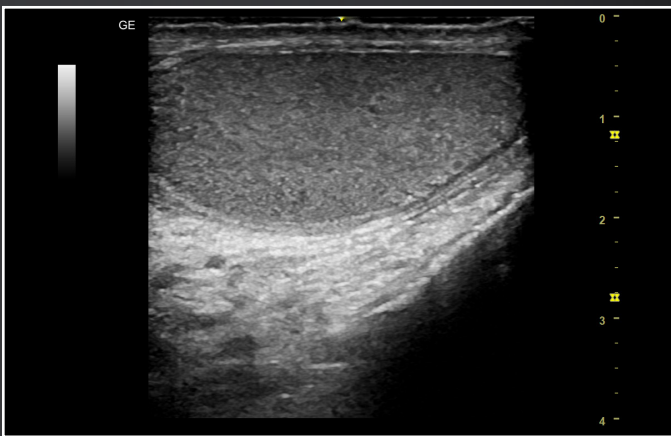
CrossXBeam and SRI-HD to define structure borders clearly.



Sensitive color Doppler to visualize blood flow.



Evaluations for prostate including biplane imaging.



Linear imaging to analyze tissue presentation and analyze blood flow.

**Versana Premier. Powerful. Versatile. Productive.**

## + **Comprehensive service and support for peace of mind**

GE delivers flexible, worry-free, multi-year coverage. It's your assurance of long life, high uptime, maximum patient volume, and strong return on investment.

- Expert service engineers always close by
- Simple maintenance; easy troubleshooting and repair
- InSite™ service technology† for fast remote diagnostics and repairs



## + **Decades of GE Healthcare heritage at your service**

Invest in Versana Premier and benefit from vast GE expertise in ultrasound. It's designed with you, your practice, and your patients in mind to meet your clinical, workflow and connectivity needs.





# A complete solution

Advanced urology capability, clinical education, and financing to fit your budget.

## + Versatile system, simple to use

Multiple exam protocols and urology applications help you diagnose a wide spectrum of patient conditions. Intuitive automated tools streamline workflow.



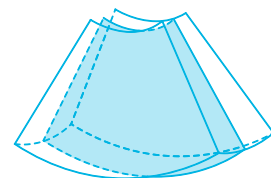
Use **Whizz** dynamic image tuning continuously optimizes the image as you scan, even as you move from one organ or area to another



Customize automated protocols with **Scan Assistant**



Make automatic volumetric measurements with **AutoBladder**



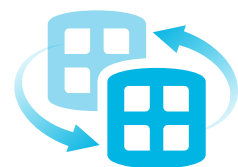
Use **3D volume** imaging for rich anatomical views



Use a **convex probe** for high-quality kidney exam



Perform precise biopsies with **biopsy guides** and **Needle Recognition**



Compare current and prior exams side-by-side with the **Follow-Up Tool**



Use **TruScan** to review and analyze images after exams at your convenience



**Network options** let use the cloud<sup>1</sup> to share images with other clinicians or patients<sup>2</sup>



## Flexible financing choices to enhance return on investment

Financing plans<sup>3</sup> including monthly payments help you meet your financial goals and grow your practice.

## + Ergonomic features for clinician and patient comfort\*



Versana Premier. Powerful. Versatile. Productive.

## + Sharpen your skills and stay ahead of the curve

- Scan Coach: 3D animation, anatomic illustrations and reference images
- My Trainer: on-board help with system care, setup and operation
- Web-based product and urology clinical tutorials
- Local face-to-face training and remote application support\*

\* Optional features which may vary from country to country



# An opportunity for growth

*Ultrasound to serve you well today and set your course for the future.*

## + Experience the strength of the GE Healthcare family

Your support team is fully trained & GE Healthcare qualified, deeply experienced, and close by.

- Expert support during and after purchase
- In-depth product instruction
- Remote or on-site technical, clinical and network support

## + Customized solutions and path to growth

Help your practice grow with Versana Premier. You can select a basic package, with the option to add more probes and software. Or let GE experts help select another system to suit your needs.

## + Versana Club: Learn. Network. Share.

The Versana Club gives you access to member resources members that can help expand your ultrasound knowledge and improve your practice. It's a place to share images with your peers from around the world.

### *You'll also enjoy:*

- Educational offerings
- Web-based video tutorials
- Information on Versana family service solutions and products
- Up-to-date content on ultrasound and patient care
- Notices of regional ultrasound events and other news
- Access to the broader family of GE ultrasound user clubs



## Versana Premier. Care with Confidence.

***Powerful. Versatile. Productive. World-class ultrasound designed for peace-of-mind.***

<sup>†</sup> Local educational offerings may vary according to regions. Please check with your local GE representative.

<sup>\*</sup> Option may not be available in all countries.

<sup>1</sup> Requires internet connection; may not be available in all countries.

<sup>2</sup> Image sharing to mobile devices via Bluetooth available in some countries

<sup>3</sup> Financing options vary from country to country. Please check with your local GE representative.

Products mentioned in this material may be subject to government regulation and may not be available in all countries. Please check with your local Sales Representative. Shipment and the effective sale in certain countries can only occur if the product is approved. Final product configuration and features may differ from the ones represented here and may not be available in every country. Check with your local GE representative for details.

Imagination at work

© 2018 General Electric Company - All rights reserved.

GE Healthcare reserves the right to make changes in specifications and features shown herein, or discontinue the product described at any time without notice or obligation. Contact your GE Healthcare representative for the most current information. GE, GE Monogram, Versana Premier, InSite, CrossXBeam and B-Flow are trademarks of General Electric Company. GE Healthcare, a division of General Electric Company. GE Medical Systems, Inc., doing business as GE Healthcare.

JB60185XX