



# VOLUSON HD*live* TECHNOLOGIES

S10 EXPERT

YOUR VISION – NEW PERSPECTIVES

Having more information can help enrich clinician-patient communication and facilitate a more complete understanding of exam results. With Voluson's™ suite of HD*live*™ technologies, reveal a unique clinical perspective of fetal and female anatomy that brings unprecedented anatomical realism to surface, vascular, and internal structures.

Powered by the Voluson Core Architecture, HD*live* utilizes a combination of advanced skin illuminating and shadowing techniques to expose possible hidden details for a deeper understanding of relational anatomy and developing structures.



# ILLUMINATING THE FINE DETAILS

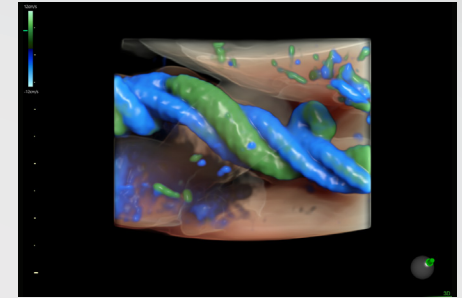
*Realistic images for meaningful dialogues*



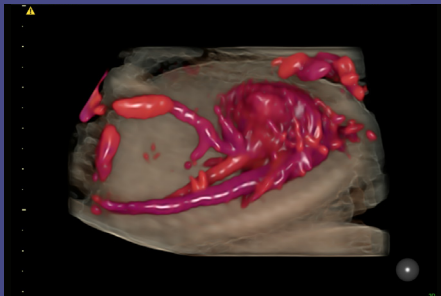
**HD*live*** – Delivers customizable virtual light source. Select light target area, intensity, and direction to highlight depth perception and internal structures.



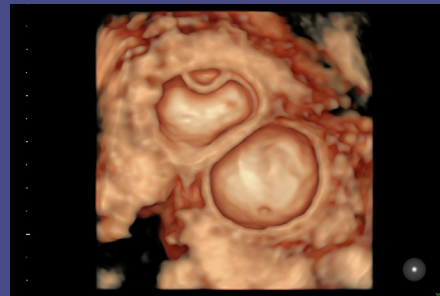
**HD*live* Silhouette** – Dynamically apply targeted transparency to rendered structures for a more thorough view of anatomy from a solid surface structure to developing internal anatomy.



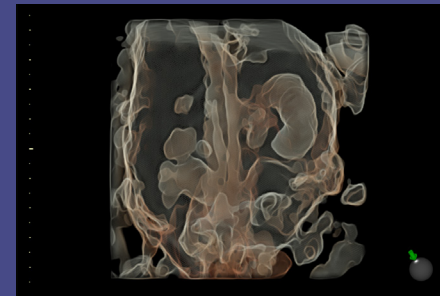
**HD*live* Flow** – Clearly display vascular structures and orientation with greater dimension and illumination.



20 week fetal heart with great vessels



Complex adnexal mass



Fetal abdomen



Fetal Skeleton



© 2018 General Electric Company – All rights reserved.

GE Healthcare reserves the right to make changes in specifications and features shown herein, or discontinue the product described at any time without notice or obligation. Contact your GE Healthcare representative for the most current information. GE, the GE Monogram, Voluson, and HD*live* are trademarks of General Electric Company. GE Healthcare, a division of General Electric Company. GE Medical Systems, Inc., doing business as GE Healthcare.

March 2018  
JB55327XXau