

# Voluson Performance Series

## Your first Voluson

Voluson\* Women's Health ultrasound has developed a strong reputation for high performance – exceptional 2D image quality, practical volumetric tools, innovative probes and streamlined ergonomics that help drive efficient workflow. The new Voluson Performance Series continues the tradition at a price that suits your budget.

With the Voluson Performance Series, you can depend on an easy to use system that helps provide consistent, exceptional images across applications – from routine OB evaluations and gynecological studies to cardiac, abdominal, vascular, and small parts scanning.

As with other Voluson systems, the Voluson Performance Series provides innovative tools and design features including:

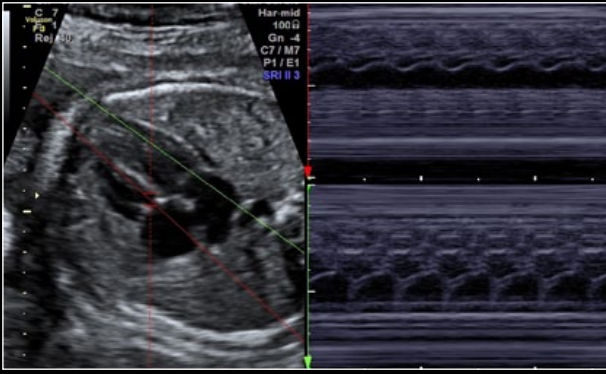
- Excellent 2D and 3D image quality
- Intuitive, easy to use keyboard
- Easy-to-learn workflow tools including image optimization features such as Auto Optimization, Auto Focus and SonoRender Start
- Streamlined reporting tools
- Quality service and support

By choosing an affordable Voluson Performance Series, your practice will be able to benefit from Voluson quality imaging and help improve patient care.

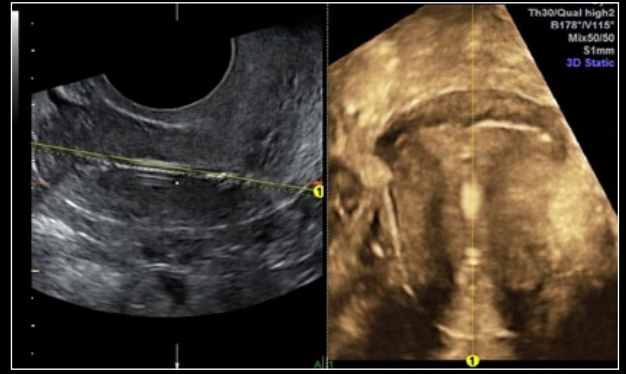
For more information please contact your GE Healthcare sales representative.



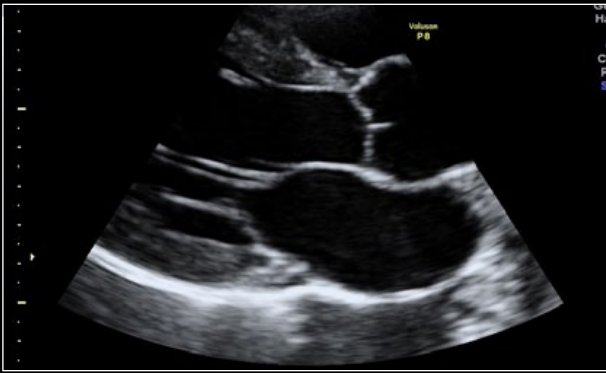
# Quality you can rely on



Fetal heart with Anatomical M-Mode, using the RAB2-5-RS probe.



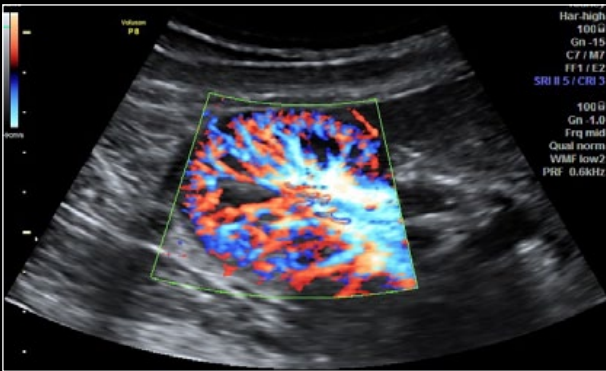
Uterus with an IUD shown with 3D using the RIC5-9W-RS probe.



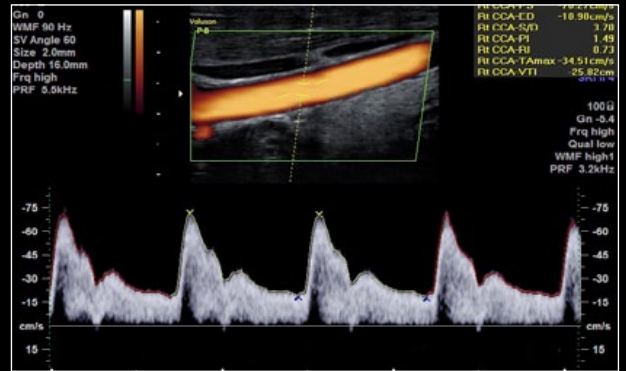
Cardiac view shown using PLAX view 3Sc-RS probe.



3D fetal face for increased clinical confidence using the RAB2-5-RS probe.



Kidney with HD-Flow\* using the 4C-RS probe.



Carotid artery with PF and spectral Doppler, using the 12L-RS probe.

GE Healthcare  
9900 Innovation Drive  
Wauwatosa, WI 53226  
U.S.A.

[www.voluson.gehealthcare.com](http://www.voluson.gehealthcare.com)

Europe  
GE Healthcare  
Beethovenstr. 239  
D - 42655 Solingen  
T 49 212 2802 0  
F 49 212 2802 28

Asia  
GE Healthcare Clinical  
Systems ASIA  
[gehealthcare.com](http://gehealthcare.com)

©2012 General Electric Company – All rights reserved.

General Electric Company reserves the right to make changes in specifications and features shown herein, or discontinue the product described at any time without notice or obligation. Contact your GE Representative for the most current information.

GE, GE Monogram, and Voluson are trademarks of General Electric Company.

GE Medical Systems Ultrasound & Primary Care Diagnostics, LLC, a General Electric company, doing business as GE Healthcare.

\* Trademark of General Electric Company.

