



Voluson S8

YOUR UNIQUE DEMANDS
REQUIRE DISTINCT ANSWERS

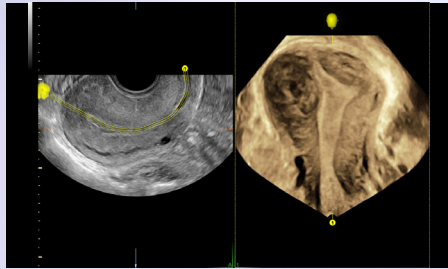
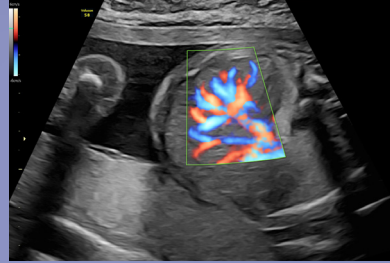
The flexible Voluson™ S8 ultrasound system is designed for the unique demands that busy practices encounter. With its effortless imaging and efficient workflow, you can obtain the answers you need with speed and confidence. Reduce time spent on image acquisition, analysis, and reporting with advanced automation tools, exam guidance and streamlined reporting allowing you to focus on what's most important, your patients and practice.

Extraordinary Imaging Simplified

Advanced capabilities for diagnostic confidence

Built on Voluson Core Architecture, the S8's performance comes from the synergy between the probes and platform. The result, excellent imaging with little adjustment.

- Excellent **2D image clarity** and detail
- **3D/4D technologies** that expand clinical confidence
- Highly sensitive **Advanced Color Doppler**
- **Exceptional penetration** in difficult to image patients



Enhance visualization in 3D/4D with **OmniView** which allows assessment of irregularly shaped structures by simply drawing a line on anatomy, then adjust slice thickness using **Advanced Volume Contrast Imaging (VCI)** to improve contrast resolution

Optimize your skills by accessing **educational content** directly on your ultrasound system



Enrich clinician-patient communication with the realistic anatomical detail, depth and clarity **HDlive** rendering provides

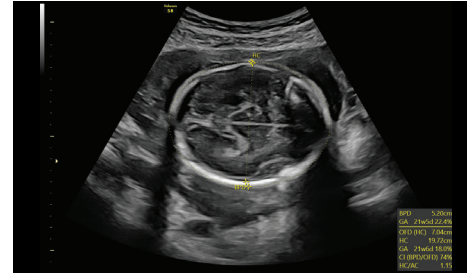
Explore **3D Printing** for rapid clinical prototyping, and to enhance parental bonding



Make the Most of Your Day

Boost your efficiency

Decrease complexity and increase exam consistency with Voluson's **Sono-Automation** technologies



Automate OB measurements for fetal heart rate and biometry (BPD, HC, AC, FL, HL, lateral ventricle, cisterna magna and cerebellum) with **SonoFHR and SonoBiometry**

Enhance productivity and exam consistency with **Scan Assistant**, flexible, customizable exam protocols that provides exam guidance to ensure completeness of exams

Ergonomically designed for comfort with a **23" widescreen monitor**, 20 minute battery operation and ~15 seconds wake time from sleep means you're always ready to go

Leverage Our Entire Ecosystem

Harness the true power of Voluson by taking advantage of all we have to offer

Join **Voluson Club** – The only ultrasound community dedicated to the education and collaboration of women's health providers

>36K
members



Protect sensitive data with SonoDefense, advanced security features for Voluson systems, including **Whitelisting** and **HD encryption**

Create structured reports (obstetrics and gynecology) in minutes and then export PDF reports with images and graphs at the touch of a button

Tricefy™ inside your Voluson enables easy connectivity to securely archive, collaborate and instantly share images with patients

Tricefy



Count on responsive service and support from dedicated staff and programs that truly meet your Training, Maintenance, Repair, Remote Support needs and more



© GE, 2021

GE Healthcare reserves the right to make changes in specifications and features shown herein, or discontinue the product described at any time without notice or obligation. Contact your GE Healthcare representative for the most current information. GE, the GE Monogram, Voluson and HDlive are trademarks of GE. Tricefy™ is a registered trademark of Trice Imaging, Inc. GE Healthcare, a division of GE. GE Medical Systems, Inc., doing business as GE Healthcare.

November 2021
JB18023XX