

GE Healthcare

# LOGIQ E9 with XDclear

Make every day extraordinary



healthymagination



GE imagination at work



## LOGIQ E9 with XDclear

Today, LOGIQ\* E9 with XDclear gives you a renewed freedom to use ultrasound in new ways. You now have the power of extraordinary image quality on all patient body types, thanks to the combination of the Agile Acoustic Architecture with the new XDclear transducer technology.

The LOGIQ E9 with XDclear helps you improve workflow with ease, being assisted in your exams by advanced imaging and scanning protocols. The comprehensive expert tools, made easier for you, today include also 2D Shear Wave Elastography for abdominal and superficial examinations.



## ➤ Extraordinary images to help improve diagnostic confidence

Great image quality requires innovation throughout the image chain from the generation of high quality transmit pulses to the final display of the image. It's a challenge that the LOGIQ E9 with XDclear is ready to face with its new powerful platform enabling the adoption of GE's most recent innovations. Today the combination of the Agile Acoustic Architecture with the new XDclear transducer technologies and the Speed of Sound capabilities takes image quality to a greater level. This provides impressive deep penetration as well as high resolution, hence extending the ability to use ultrasound with a wider range of patient bodies.



### Agile Acoustic Ultrasound:

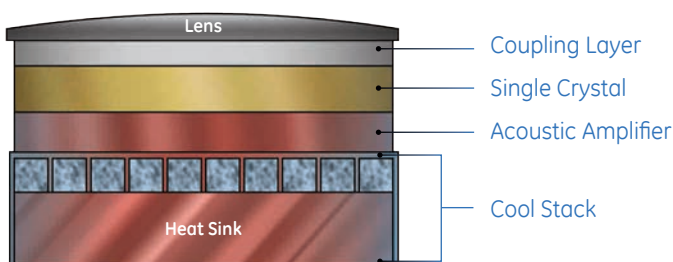
the LOGIQ E9 powerful architecture overcomes the traditional rigid assumptions, showing a flexible ultrasound approach built on proprietary clinical models of the human body. The Agile Acoustic Architecture helps dynamically improve numerous imaging parameters. You can now acquire great images with minimal system adjustments, delivering remarkable image uniformity and enabling higher frequency at depth.

### XDclear transducer technology:

the proprietary combination of advanced materials and innovative design leads to this amazing transducer technology. The LOGIQ E9 with XDclear platform enables these new transducers of the advanced E-series family. The XDclear design incorporates Single Crystal technology to generate high quality acoustic signal. This quality is preserved through an innovative Acoustic Amplifier design coupled with GE's patented Cool Stack technology to help optimize energy management. This combination helps maximize the signal intensity to increase penetration and simultaneously deliver high definition resolution throughout the image.

### E-series transducers:

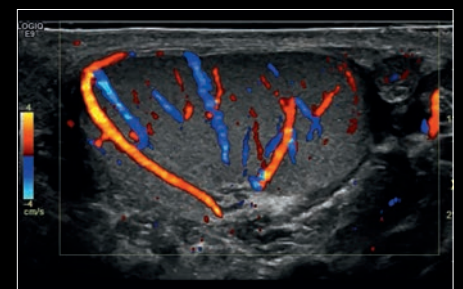
a wide range of powerful technologies including Active Matrix, hybrid 3D/4D transducers and XDclear enables the acquisition of great images helping increase diagnostic confidence.



The ability to effectively and efficiently combine and manage these technologies is what makes LOGIQ E9 with XDclear extraordinary.



High spatial and contrast resolution of the Inferior Vena Cava with C2-9-D probe



High resolution imaging of the testicular flow with ML6-15-D probe

## ▶ Expert tools made easier for a quick adoption in your daily practice

LOGIQ E9 with XDclear is equipped with a variety of advanced features enabling advanced exams and helping you to be at the leading edge in your clinical studies. Now it's easier and more intuitive than ever to help you migrate advanced tools into routine in order to support your daily practice.



### Elastography:

comprehensive package offering Strain Imaging Elastography (with qualitative and semi-Quantitative information) and the new 2D Shear Wave Elastography, to help you assess tissue stiffness and improve your diagnostic confidence in a wide range of clinical applications.

### Contrast-Enhanced Ultrasound with TIC quantification:

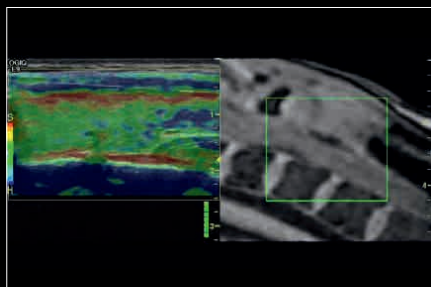
a full suite of settings for a superb contrast agent sensitivity, resolution and penetration in a range of clinical applications.

### B-Flow Imaging:

based on GE coded technology, B-Flow displays true flow hemodynamics without the limitations of Doppler, helping improve your clinical confidence in vascular assessment.

### Volume Navigation:

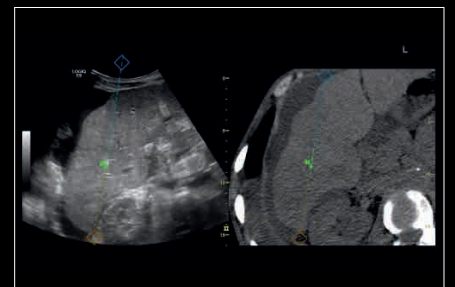
a complete suite of features including tracking GPS markers, Fusion imaging capabilities (now also with SPECT), Tru3D and real time Needle Tracking solutions to help manage your patient in any stage of the care path. Simple and intuitive, the new Active Tracker with OmniTRAX\*\* bracket introduces amazing US/CT Auto Registration with a one click operation, perfect to be adopted in a busy set up. Patient motion, breathing and transmitter movements are now managed with increased registration accuracy. A wide range of transducer's brackets are available to cover many clinical applications.



Thyroid follow up exam with V Nav Fusion imaging and elastography with ML6-15-D probe



Single contrast image and accumulation of a Focal Nodular Hyperplasia with 9L-D probe



V Nav Fusion imaging with Needle Tip Tracker targeting a liver lesion in an out of plane approach

▶ Easy workflow to help improve your productivity and scanning comfort



The LOGIQ E9 with XDclear provides easy-to-use tools that help busy department and practices improve workflow without compromising image quality and diagnostic confidence. From dedicated scanning and imaging protocols to an intuitive platform management, everything to make it smoother and help improve your productivity.



**Measure Assistant packages** offer guidance to easily trace lesion borders and measure their size. Dedicated Productivity packages help classify and describe lesions according to standard lexicon. This makes preparing and sending DICOM\*\* SR reports easier for you.

**Compare Assistant** makes today's ultrasound examination follow-ups easier, as it allows you to easily view a prior study in split screen simultaneously while performing the current study. Compare Assistant helps you through the entire exam, from preparation to image interpretation, enabling you to replicate prior views and scanning parameters. If the previous study was performed on a current-generation LOGIQ E9 system, Compare Assistant can even automatically set the scanning parameters thanks to the GE Raw Data capabilities.



**Scan Assistant** guides you through customizable scanning protocols that help improve exam standardization, consistency and productivity of your department.

**A fully adjustable monitor** and console, four active pinless transducer ports and a fully configurable touchscreen help you reach an extended flexibility with scanning comfort.



## About GE Healthcare

GE Healthcare provides transformational medical technologies and services that are shaping a new age of patient care. Our broad expertise in medical imaging and information technologies, medical diagnostics, patient monitoring systems, drug discovery, biopharmaceutical manufacturing technologies, performance improvement and performance solutions services help our customers to deliver better care to more people around the world at a lower cost. In addition, we partner with healthcare leaders, striving to leverage the global policy change necessary to implement a successful shift to sustainable healthcare systems.

Our “healthymagination” vision for the future invites the world to join us on our journey as we continuously develop innovations focused on reducing costs, increasing access and improving quality around the world. Headquartered in the United Kingdom, GE Healthcare is a unit of General Electric Company (NYSE: GE). Worldwide, GE Healthcare employees are committed to serving healthcare professionals and their patients in more than 100 countries. For more information about GE Healthcare, visit our website at [www.gehealthcare.com](http://www.gehealthcare.com).

GE Healthcare GmbH  
Beethovenstr. 239  
42655 Solingen, Germany  
T 49 212-28 02-0  
F 49 212-28 02-28

[www.gehealthcare.com](http://www.gehealthcare.com)



### UNITED KINGDOM

GE Medical Systems  
Ultrasound  
71 Great North Road  
Hatfield, Hertfordshire  
AL9 5EN  
T 44 1707 263570  
F 44 1707 260065

### AMERICAS

GE Healthcare  
9900 Innovation Drive  
Wauwatosa, WI 53226  
U.S.A.  
T 1 888 202 5582

### APAC

GE Healthcare Asia Pacific  
4-7-127, Asahigaoka, Hino-shi  
Tokyo 191-8503 Japan  
Tel: +81 42 585 5111

### ANZ

Tel: 1300 722 229 (Australia)  
Tel: 0800 434 325 (New Zealand)

### ASEAN

Tel: +65 6291 8528

### Korea

Tel: +82 2 6201 3114

\* Trademark of General Electric Company

\*\* Third party trademarks are the property of their respective owners  
All comparisons are to previous versions of LOGIQ E9

©2014 General Electric Company – All rights reserved.

General Electric Company reserves the right to make changes in specifications and features shown herein, or discontinue the product described at any time without notice or obligation. Contact your GE Representative for the most current information.

GE, the GE Logo and LOGIQ, are trademarks of General Electric Company.

JB24210XE

Printed in Austria - 300-14-U033E